

Architectural Design Associates



# Practice Profile

## Introduction and Background

Architectural Design Associates (ADA) is a fully Empowered Practice established in June 2000 with a **Level 1 BBBEE** accreditation. The Company specializes in all fields of Architecture, Contract Administration and Urban Design.

ADA has a national representation through a network of regionally based offices namely Gauteng, Port Elizabeth, Durban and Pretoria.

ADA is managed by 5 Partners nationally and has specialized skills with specific responsibilities and dedication to manage projects from inception to completion. They are supported by competent Architects, Graphic Designers and Technicians.

ADA's philosophy is to strive on quality design, documentation and on time delivery. We provide our Clients with all the skill and experience required to transform quality design into finished product.

We have serviced our Clients in various industries namely Commercial, Industrial,

## BEE Policy

Architectural Design Associates (ADA) is 80% owned and managed by Previously Disadvantaged Individuals. ADA is committed to skills development to previously disadvantaged individuals through employment opportunities, mentorship and bursaries.

ADA has in the past year given 10 Previously Disadvantaged Individuals study bursaries as well as in service training.

### THE FIRM'S CURRENT RECRUITMENT, DEVELOPMENT POLICY AND SKILLS TRANSFER

- Identify keen and technically suitable people especially from previously disadvantaged communities.
- Develop staff technically by encouraging them to gain relevant work experience and continued academic education.
- Empower staff to gain leadership and management skills.
- Employ people on the basis of ability, loyalty and subscription to Company policies rather than gender, colour or race.
- Promotion of young Architects from previously disadvantaged backgrounds to managerial positions.
- In-house training to achieve skills transfer.
- Attending Institute of Architects' contract administration seminars.
- Training on ADA's practice manual encompassing design technical documentation, contract administration and management of the Company.

## BEE Structure

### Management and Staff

- 80% owned and managed by PDI
- 60% staff complement are PDI



Architectural Design Associates management and staff have experience in corporate/commercial, retail, industrial/business parks, residential, technical and urban design.  
The following are some of the project undertaken by the Company:

## Project Experience

Projects	Value	Client
McDonald's – Nationally	R400m	McDonald's SA
MTN Switch Centres	R110m	MTN
Lear Corporation Factory, Rosslyn	R52m	AIDC
Central Hub Facility, Rosslyn	R65m	AIDC
Logistic Centre, Rosslyn	R32m	AIDC
Shosholozza Meyl Upgrade	R25m	Intersite
Park Station Upgrade	R100m	Intersite
Tshwane Fresh Produce Market	R70m	City of Tshwane
Soshanguve Giant Stadium	R20m	City of Tshwane
Marriott Hotel, Cape Town	-	Old Mutual
NMBM Logistics Park, Uitenhage	R200m	NMBM
Coega IDZ Speculative Warehouse	R30m	CDC
George Airport Upgrade	R35m	ACSA
Monte Casino East End Dev.	R250m	Tsogo Sun/MDS
SAPS Contact Centres	R16m	Intersite/SAPS
Gautrain Independent Certifier	R20b	Gauteng Province
VWSA Distribution Centre	R90m	VWSA
NMB 2010 WC Stadium, P.E.	R1,1b	NMB Metro
Bridge City Precinct Development	R220m	Crowie Projects
Queenstown Shopping Centre	R200m	Landmark/Eris Properties
Umlazi Magistrate Court Upgrade	R42m	Dept. of Public Works
Sandton Development Bid	-	JPC
Eastgate Repositioning	R22m	Liberty Properties
Clayville HLV Processing Plant	R300m	Adcock Ingram
Botshabelo Shopping Centre	R200m	Liberties Properties
Ford Silverton	R37m	SPDC
Prasa Station Modernisation, KZN	R250m	PRASA
MTN Newlands Expansion Project	R200m	MTN
FNB Contact Centre Ferndale	R550m	FNB BMS

South African Institute of Architects  
Gauteng Institute for Architects  
South African Property Owners Association  
Green Building Council

## Memberships



**Johannesburg**

129 Jan Smuts Ave  
Parkwood  
2193

**Physical Address**

P O Box 87076  
Houghton  
2041

**Postal Address**

+27 11 880 0600

**Telephone**

+27 11 880 0603

**Facsimile**

jhb@ada.co.za

**Email**

www.ada.co.za

**Website**



**Architectural Design Associates  
(Group) (Proprietary) Ltd.**

Reg No 2000/025825/07



## Management Team

Dhiroo is the founder and Managing Director of ADA. His passion for architecture is evident in the wide range of successfully completed projects he has been involved in for over 30 years, including large scale Commercial, Retail, Institutional and Industrial projects. Although based in Johannesburg, Dhiroo is actively involved in all of ADA's offices nationally.

**Dhiroo Kalian**  
DIRECTOR



*Key Project Experience:*

Sandton Sun Hotel, JHI House - Rosebank, Mangaung Maximum Security Prison  
Bloemfontein, Discovery Health Head Office - Sandton, SARS Gauteng South  
Facility - Alberton, Nelson Mandela Bay 2010 Stadium, P.E

Malcom has been with ADA since its launch in 2000 and is actively involved in the management of the Johannesburg office. His no-nonsense approach to design and documentation standards are unique, but has an approachable personality within the ADA family. Malcom has over 10 years experience in Commercial, Industrial, Technical and Communication facilities.

**Malcom Lazarus**  
DIRECTOR



*Key Project Experience:*

MTN Switch Centres - Nationally, Tshwane Fresh Produce Market - Pretoria West  
MTN Data Centre - Newlands, Automotive Supplier Park - Rosslyn  
George Airport Extension & Upgrade, VW Distribution Centre - Centurion

Murray joined ADA in its inception in 2000 and he has over 15 years experience in Commercial, Industrial, Retail, Technical and Institutional projects. Murray is actively involved in the management of the Johannesburg office, and has a passion for co-ordination & implementation of large projects with a notable focus on contract management.

**Murray Field**  
DIRECTOR



*Key Project Experience:*

Mangaung Maximum Security Prison - Bloemfontein, Telkom Head Office -  
Centurion, Nelson Mandela Bay Logistics Park - P.E, Gautrain Independent  
Certifier - Gauteng, Adcock Ingram Pharmaceutical Plant - Clayville  
Eastgate Shopping Centre Upgrade - Phase 1

Terence has been with ADA since 2002. He is based in Johannesburg, but is actively involved in the management of both the Johannesburg and Durban offices. His responsiveness and commitment are invaluable not only to ADA, but clients as well. Terence has over 15 years experience in Institutional, Commercial, Industrial and Retail projects.

**Terence Naidoo**  
DIRECTOR



*Key Project Experience:*

Empangeni Prison - KZN, Golden Horse Casino - Pmb, KZN, Automotive Supplier  
Park - Rosslyn, International Convention Centre - Durban, Monte Casino East End  
Development - Fourways, Bridge City Shopping Centre - Durban.

Jason has been with the company since 2008. Jason is the company's lead designer and is passionate about Architecture. He is a Professional Architect registered with SACAP and has over 20 years of experience in large scale Commercial, Industrial, Residential and Retail projects.

**Jason Visser**  
ASSOCIATE



*Key Project Experience:*

Adcock Ingram HVL Plant - Olifantsfontein, Botshabelo Shopping  
Centre - Bloemfontein, Shoprite Centre - Kempton Park, Tangawizi  
Motor Showroom - Richards Bay, Fern Towers Industrial - Randburg.

Architectural Design Associates





## 2010 WORLD CUP STADIUM

LOCATION  
Nelson Mandela Bay - Port Elizabeth

TYPE  
SPORT AND RECREATION

COMPLETION DATE  
2010

SIZE  
48 000 Seater

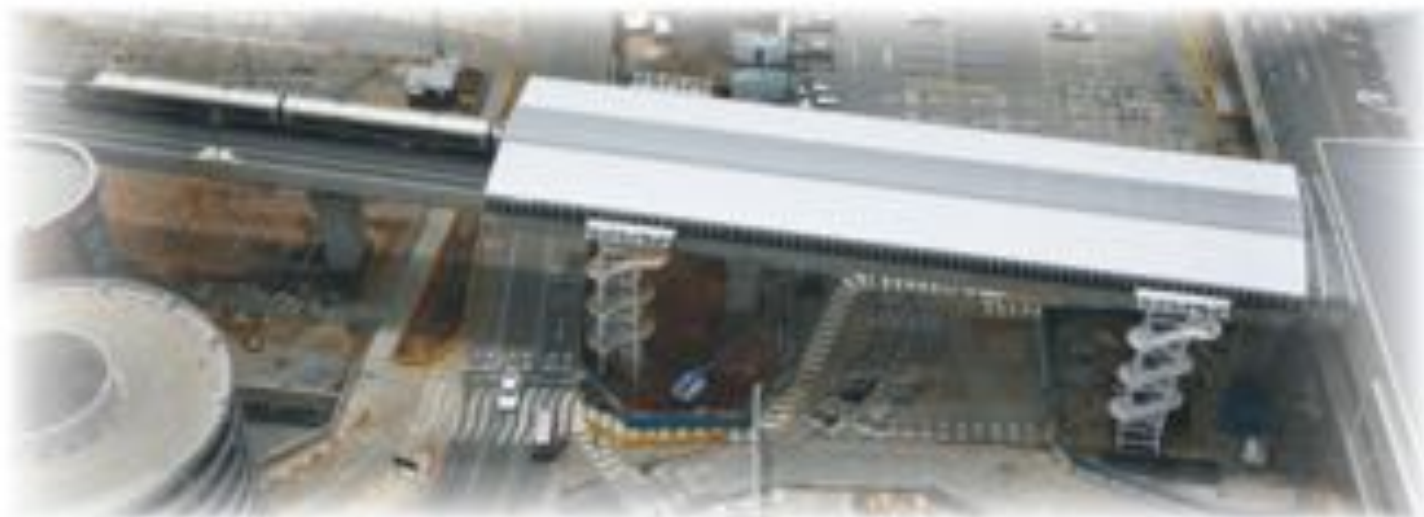
CLIENT  
W&B Municipality



Sport and Recreation

Architectural Design Associates





## GAUTRAIN INDEPENDANT CERTIFIER FOR GAUTENG PROVINCE

LOCATION  
GAUTENG

TYPE  
TRANSPORTATION

COMPLETION DATE  
CURRENT (TBC)

SIZE  
-

CLIENT  
ARUP SA



Transportation

Architectural Design Associates







## BOTSHABELO MALL

LOCATION  
BOTSHABELO

TYPE  
RETAIL

COMPLETION DATE  
PENDING

SIZE  
25 000 m<sup>2</sup>

CLIENT  
KHORA INVESTMENTS  
STANLIB JV



Retail

Architectural Design Associates





## BRIDGE CITY SHOPPING CENTRE

LOCATION  
KWA MASHU

TYPE  
RETAIL

COMPLETION DATE  
2009

SIZE  
50 000 m<sup>2</sup>

CLIENT  
CROWIE HOLDINGS (Pty Ltd)

JOINT VENTURE  
MDS ARCHITECTURE  
DGIT ARCHITECTS



Retail





## EASTGATE SHOPPING CENTRE

REPOSITIONING - PHASE I

LOCATION  
BEDFORDVIEW

TYPE  
RETAIL

COMPLETION DATE  
2010

SIZE  
24 000 m<sup>2</sup>

CLIENT  
LIBERTY PROPERTIES (Pty Ltd)

JOINT VENTURE  
MDS ARCHITECTS



Retail

Architectural Design Associates





## SHOPRITE CENTRE UPGRADE

LOCATION  
KEMPTON PARK - JHB

TYPE  
RETAIL

COMPLETION DATE  
2009

SIZE  
8 000 m<sup>2</sup>

CLIENT  
OLD MUTUAL INVESTMENT GROUP



Retail

Architectural Design Associates







## METLIFE PLAZA UPGRADE

LOCATION  
KABEGA PARK - PORT ELIZABETH

TYPE  
RETAIL

COMPLETION DATE  
NOVEMBER 2010

SIZE  
4 000 m<sup>2</sup>

CLIENT  
METROPOLITAN LIFE PROPERTIES



Retail

Architectural Design Associates







## MONTE CASINO EAST END

LOCATION  
FOURWAYS - JHB

TYPE  
RETAIL / LEISURE

COMPLETION DATE  
JULY 2006

SIZE  
12 000 m<sup>2</sup>

CLIENT  
TSOGO SUN

JOINT VENTURE  
MDS ARCHITECTS



Retail / Leisure

Architectural Design Associates





## McDONALD'S RESTAURANTS

LOCATION  
NATIONAL

TYPE  
RETAIL

COMPLETION DATE  
2012

SIZE  
300 - 500m<sup>2</sup> EACH

CLIENT  
McDONALD'S SA (Pty) Ltd



Retail





## ADCOCK INGRAM HLV PLANT

CLIENT: ADCOCK INGRAM  
Cleveland - Michigan

TYPE:  
INDUSTRIAL

COMPLETION DATE:  
NOV 2010

AREA:  
29,800 sq ft

ARCHITECT:  
ADCOCK INGRAM



Industrial

Architectural Design Associates





## VW PARTS & DISTRIBUTION CENTRE

LOCATION  
MIDRAND

TYPE  
INDUSTRIAL

COMPLETION DATE  
2010

SIZE  
30 000 m<sup>2</sup>

CLIENT  
VOLKSWAGEN SOUTH AFRICA



Industrial

Architectural Design Associates







## AUTOMOTIVE SUPPLIER PARK

10000 SOUTHWEST  
BOSTON - PIA

INDUSTRIAL

10000 SOUTHWEST  
BOSTON - PIA

80000 sq ft

BLUE IQ



Industrial





## AUTOMOTIVE SUPPLIER PARK

LOCATION  
ROSSLYN - PTA

TYPE  
INDUSTRIAL

COMPLETION DATE  
2005

SIZE  
80 000 m<sup>2</sup>

CLIENT  
BLUE IQ



Industrial

Architectural Design Associates





## CENTRAL HUB OFFICES, RETAIL AND CONFERENCE FACILITIES

LOCATION  
SUPPLIER PARK - ROSSELYN

TYPE  
CORPORATE

COMPLETION DATE  
JUNE 2004

SIZE  
4 300 m<sup>2</sup>

CLIENT  
SUPPLIER PARK DEVELOPMENT COMPANY



Corporate

Architectural Design Associates







## LEAR CORPORATION

LOCATION  
AUTOMOTIVE SUPPLIER PARK - ROSSELYN

TYPE  
INDUSTRIAL

COMPLETION DATE  
MAY 2003

SIZE  
20000 m<sup>2</sup>

SCHEME  
BLUE HQ



Industrial

Architectural Design Associates







## LOGISTIC CENTRE

LOCATION  
AUTOMOTIVE SUPPLIER PARK - ROSSETYN

TYPE  
INDUSTRIAL

COMPLETION DATE  
SEPTEMBER 2003

SIZE  
25000 m<sup>2</sup>

OWNER  
BLUE HQ



Industrial

Architectural Design Associates





## COEGA PE

LOCATION  
MMBFP - PE

TYPE  
INDUSTRIAL

COMPLETION  
2000

AREA  
10,000 m<sup>2</sup>

OWNER  
COEGA - IDI



Industrial

Architectural Design Associates





## UDDI SUPPLIER PARK

INDUSTRIAL  
NELSON MANDELA BAY LOGISTICS PARK - PE

INDUSTRIAL

30 000 m<sup>2</sup>

30 000 m<sup>2</sup>

WITBAM



Industrial







## AUTOMOTIVE INCUBATION CENTRE FORD

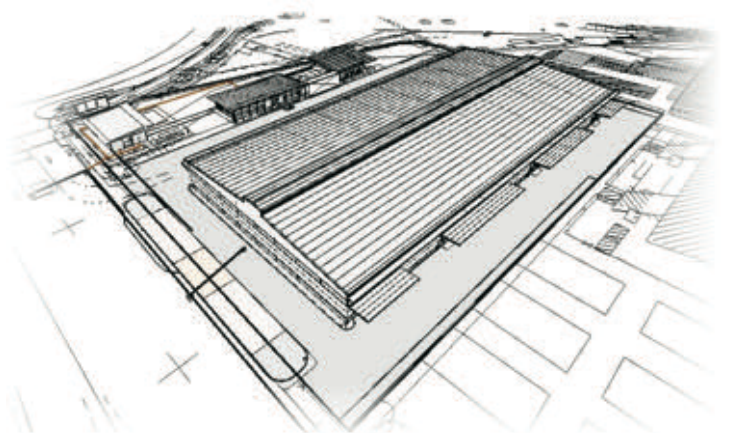
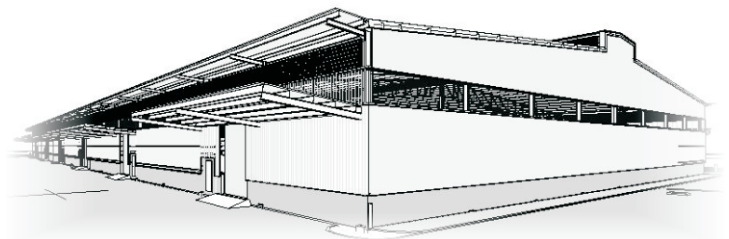
LOCATION  
SAMCOR PARK, SILVERTON, PTA

TYPE  
INDUSTRIAL

COMPLETION DATE  
FEBRUARY 2011

SIZE  
8 000 m<sup>2</sup>

CLIENT  
FORD



Industrial

Architectural Design Associates





## I4 PROP OFFICE DEVELOPMENT

LOCATION  
PARKTOWN

TYPE  
OFFICES

COMPLETION DATE  
2013

SIZE  
330 m<sup>2</sup>

CLIENT  
I4PROP



Corporate

Architectural Design Associates







## 70 GRAYSTON DRIVE UPGRADE

LOCATION  
SANDTON CBD

TYPE  
CORPORATE

COMPLETION DATE  
MARCH 2016

SIZE  
5 500 m<sup>2</sup>

CLIENT  
GROWTHPOINT PROPERTIES



Corporate

Architectural Design Associates





## NMMU NEW ENGINEERING BUILDING

LOCATION  
NELSON MANDELA METROPOLITAN UNIVERSITY  
NORTH CAMPUS, PORT ELIZABETH

TYPE  
INSTITUTIONAL

COMPLETION DATE  
SEPTEMBER 2012

SIZE  
4 876 m<sup>2</sup>

CLIENT  
NELSON MANDELA METROPOLITAN UNIVERSITY

JOINT VENTURE  
IMBONO FJA ARCHITECTS (PE)



Institutional

Architectural Design Associates







## SUZUKI DEALERSHIP

LOCATION  
NAHOON, EAST LONDON

TYPE  
MOTOR SHOWROOM

COMPLETION DATE  
DECEMBER 2013

SIZE  
1008 m<sup>2</sup>

CLIENT  
EDCOT TRUST



Motor Showroom

Architectural Design Associates







## BRIDGE CITY STATION

LOCATION  
EWK-MAHQ, DURBAN

TYPE  
TRANSPORTATION

COMPLETION DATE  
2011

SIZE  
18110 m<sup>2</sup>

CLIENT  
PRASA



Transportation

Architectural Design Associates





## GEORGE AIRPORT - UPGRADE

LOCATION  
GEORGE

TYPE OF PROJECT  
TRANSPORTATION

CONSTRUCTION COST  
\$500M

YEAR  
2008

CLIENT  
ACSA



Transportation

Architectural Design Associates





## MTN DATA CENTRE

NEWLANDS - JHB

TELECOMMUNICATION

3000

3000 m<sup>2</sup>

MTN



Telecommunication

Architectural Design Associates







## MTN SWITCH CENTRES

LOCATION  
DBN - PTA - PE - CT

TYPE  
CORPORATE

COMPLETION DATE  
2005

SIZE  
- 000 m<sup>2</sup>

CLIENT  
MTN



Corporate

Architectural Design Associates





## MUTUAL PLACE

LOCATION  
SANDTON

TYPE  
OFFICES

COMPLETION DATE  
CLIENT APPROVAL PENDING

SIZE  
8000m<sup>2</sup>

CLIENT  
OLD MUTUAL PROPERTIES

JOINT VENTURE  
IPLP ARCHITECTS



Corporate

Architectural Design Associates







## FEDERAL PALACE

LOCATION  
VICTORIA ISLAND  
LAGOS, NIGERIA

TYPE  
MIXED USE

COMPLETION DATE  
PENDING

SIZE  
121 080 m<sup>2</sup>

CLIENT  
RMB WESPORT

JOINT VENTURE  
PARAGON ARCHITECTS



COMMERCIAL

Architectural Design Associates





## GROWTHPOINT OFFICES

LOCATION  
PARKTOWN - JHB

TYPE  
CORPORATE

COMPLETION DATE  
PENDING

SIZE  
5 500 m<sup>2</sup>

CLIENT  
GROWTHPOINT PROPERTIES



Corporate

Architectural Design Associates

